

VISUALIZATION

CAMERAS / ENDOSCOPES /
LIGHT SOURCES / MONITORS

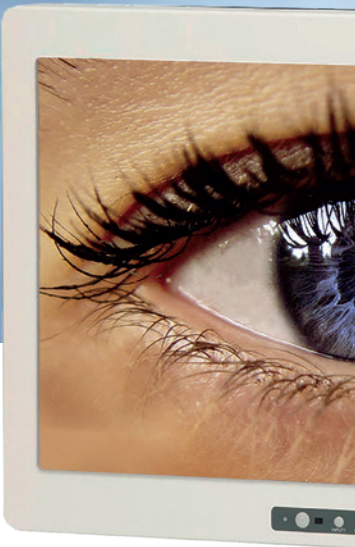


FULL HD VISUAL CHAIN

INTELLIGENT SYSTEMS
THAT ARE ATTUNED TO
ONE ANOTHER

IMAGE QUALITY AT THE HIGHEST LEVEL

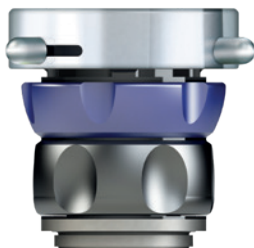
It is our goal to enable the surgeon and his team to achieve best performance by offering the highest image quality. This requires high quality in all components involved in imaging process and a good parameter match between them. Our range of products for visualization involve all necessary products for the imaging process starting from optics, camera systems with capture mode and light sources.



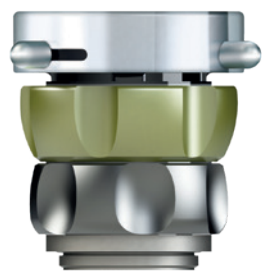
Camera head and lense
Art. No. 8745KKK + 8825



STANDARD-LENS
25



ZOOM-LENS
16-34



ZOOM-LENS
16-32 PARFOCAL

FULL HD VISUAL CHAIN



26" LCD-Display incl. power supply
Art. No. 7738-26

Endo-View 3CMOS HD
Art. No. 7736WDH3C



HD-Laparoscope
Art. No. 7605WA3W



LED Illumination L300
Art. No. 7720L300

ENDVIEW 4K

ULTRA HIGH DEFINITION CAMERA 3-MOS

TECHNICAL DATA

4K CAMERA HEAD

Aspect ratio	16:9
Image sensor	3x 1/3" MOS
Cleaning	Immersible (using the attached cap)
Operator interface	4 push buttons
Length	85,7 mm (without grommet)
Diameter	43 mm
Weight	200 g

TECHNICAL DATA

ENDVIEW 4K

Voltage range (current consumption)	100-240 V (60 VA)	
Frequency	50-60 Hz	
Device protection	2x T3,15 A	
Video system	Image resolution: UHD 3840 x 2160 TV resolution: 1600 lines White balance: Automatically, with data hold	
Video output	1x HDMI 4K (3840 x 2160) 1x HDMI Full HD (1920 x 1080) 1x SDI 4K (4x BNC) (3840 x 2160) 1x SDI Full HD (1x BNC) (1920 x 1080)	
Video format - HDMI output	3840 x 2160 – 59.94p 1920 x 1080 – 59.94p 1920 x 1080 – 50p	3840 x 2160 – 50p 1920 x 1080 – 59.94i 1920 x 1080 – 50i
Video format - SDI output	3840 x 2160 – 59.94p 1080 – 59.94p 1080 – 50p	3840 x 2160 – 50p 1080 – 59.94i 1080 – 50i
Protection class	I (according to IEC 60601-1)	
Safety class	BF	
IP code	IP20	
Standard	IEC 60601-1-2 / IEC 60601-1-1	
Device classification	acc. to MDD 93/42/EEC = I	
Dimensions: Width, Height, Depth	355 mm x 103 mm x 350 mm	
Weight	approx. 6,2 kg	



ENDOVIEW 4K

ULTRA HIGH DEFINITION CAMERA 3-MOS

VISUALIZATION



CRISP+CLEAR

ULTRA HIGH DEFINITION CAMERA 3-MOS

ENDOVIEW 4K

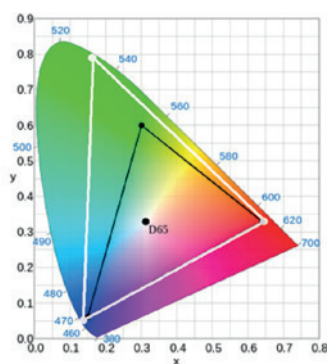
ULTRA HIGH DEFINITION CAMERA 3-MOS

HIGHEST RESOLUTION FOR HIGHEST DEMANDS

Our latest camera system offers the highest resolution for the best view of the operating field. The new technology allows us to use larger screens with consistent image quality and excellent detail. This allows safe working and reduces operator fatigue.



EndoView 4K UHD
Art. No. 7737WD4KC



COLOUR SPACE

The camera is able to reproduce the extended color space BT.2020 in addition to the BT.709 color space for HDTV. Prerequisite is a BT.2020 compatible monitor.

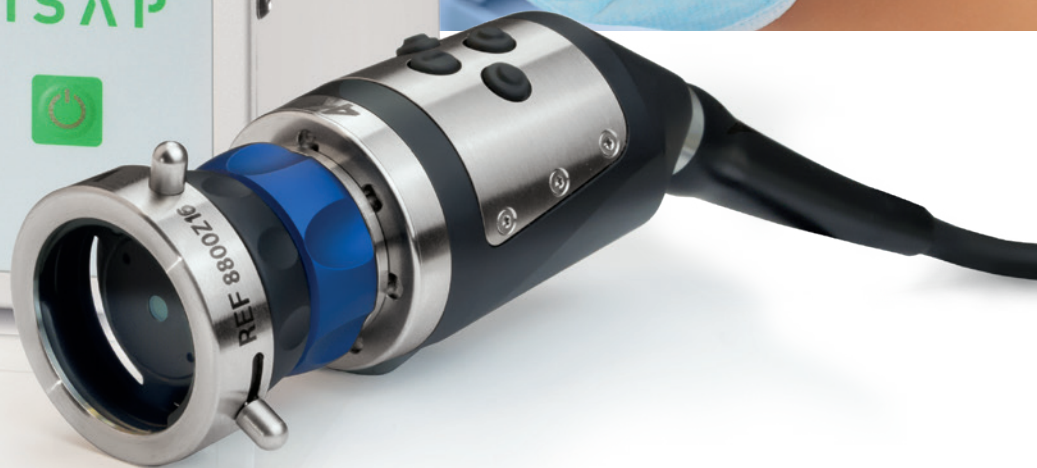
4K UHD RESOLUTION

ZOOM, FREEZE, FOG
REDUCTION

IMAGE ENHANCEMENT OF
COLOUR AND STRUCTURE

10 USER PRESETS FOR
SURGICAL APPLICATION

MULTILINGUAL MENU



ENDOSCOPIC CAMERA SYSTEM CMOS TECHNOLOGY

EndoView 3CMOS HD

- Full HD 1920 x 1080 pixel
- High sensitivity enables brighter images
- High resolution implies sharp images
- Format 16:9
- Digital HD-SDI output
- Camera settings via OSD
- 5 user profiles
- Low heat build up
- Exchangeable head cable
- Remote head keys
- C-Mount for lenses

FULL HD

DIGITAL/ANALOG OUTPUT

USB PORT

BUTTONS
PROGRAMMABLE

ORDER DATA

ENDOVIEW 3CMOS HD

7736WDH3C	EndoView 3CMOS HD (Set)
8745UC	Camera controller with capture mode
8745KKK	Camera head with cable without lens
8825	Lens standard C-Mount 25 mm
8800Z16	Lens zoom C-Mount 16-34 mm
8800Z18	Lens fix focus C-Mount 18-32 mm

ELECTRICAL DATA

ENDOVIEW 3CMOS HD

Mains voltage	Medical global power adaptor, 100 to 240 V, 50/60 Hz
Power consumption	Max. 20VA

CERTIFICATION DATA

ENDOVIEW 3CMOS HD

Approvals	The CE labeling is performed in accordance with the EU-guidelines 93/42/EWG, Annex II
Safety data	Class I according to 93/42/EWG I, Protection class I, Type BF

STERILIZATION METHOD

ENDOVIEW 3CMOS HD

Sterilization control unit	Wipe-disinfection
Sterilization camera head	Submerging disinfection, no sterilization in autoclave

ENDOSCOPIC CAMERA SYSTEM CMOS TECHNOLOGY

Camera head buttons are equipped with user and remote control of accessory devices

Handy rest of the focus ring enables easy and low-friction manipulation

C-mount optics 25 mm and further optics optional

Optics coupling, made of stainless steel, which automatically adapts to any brand. Thus the camera can be prepared for any discipline within seconds.

The angled camera cable facilitates the visual and tactile orientation.

SYSTEM FEATURES

ENDOVUE 3CMOS HD

Video Standard	Full HD 1920 x 1080
Chip	3x1/3" MOS Sensitivity: < 3 lux (1/1.4)
Camera Head	With push buttons
Shutter	1/50 (1/60) to 1/100.000 sec
White balance	Auto Tracing, Auto, Manually
User Menu	3 scene files for user settings. Operation with keypad and in Screen Menu
Features	Boost - Function Freeze -Function 2.5 digital zoom Character generator
Video out	1x HDMI / DVI 1x Y-Pb-Pr (Component) 1x Video (PAL / NTSC) 1x S-Video (PAL / NTSC)
Delivery contains	CCU, camera head with 3 m cable, mains cable, Y/C cable, BNC cable, HDMI - DVI cable, HDMI cable, user manual
Features (optional)	Image capture, video capture

MECHANICAL DATA

ENDOVUE 3CMOS HD

Dimensions (Camera controller)	w x h x d = 350 x 65 x 275 mm
Dimensions (Camera head)	Ø max. 34 mm x 73 mm
Casing	Stainless steel, aluminium / white coated
Objective connection	C-Mount
Camera cable	3 m / 9.8 ft highly flexible special cable, replaceable, short circuit proof
Weight (camera controller)	4,1 kg
Weight (camera head)	145 g

ENDOSCOPIC CAMERA SYSTEM CMOS TECHNOLOGY

EndoView 1CMOS HD

- Full HD 1920 x 1080 pixel
- High sensitivity enables brighter images
- High resolution implies sharp images
- Format 16:9
- Digital HD-SDI output
- Camera settings via OSD
- 5 user profiles
- Low heat build up
- Exchangeable head cable
- Remote head keys
- C-Mount for lenses

FULL HD

DIGITAL/ANALOG OUTPUT

USB PORT

BUTTONS
PROGRAMMABLE

ORDER DATA

ENDOVIEW 1CMOS HD

7735WDH1C	EndoView 1CMOS HD (Set)
8635UC	Camera controller with capture mode
8635KKK	Camera head with cable without lens
8825	Lens standard C-Mount 25 mm
8800Z16	Lens zoom C-Mount 16-34 mm
8800Z18	Lens fix focus C-Mount 18-32 mm

ELECTRICAL DATA

ENDOVIEW 1CMOS HD

Mains voltage	Medical global power adaptor, 100 to 240 V, 50/60 Hz Fuses: 2 Fine fuses, 5x20 mm, delay acting 3,15 AH (I=1500A)
Power consumption	20 VA

CERTIFICATION DATA

ENDOVIEW 1CMOS HD

Approvals	The CE labeling is performed in accordance with the EU-guidelines 93/42/EWG, Annex II
Safety data	Class I according to 93/42/EWG, Protection class I, Type BF

STERILIZATION METHOD

ENDOVIEW 1CMOS HD

Sterilization control unit	Wipe-disinfection
Sterilization camera head	submerging disinfection, no sterilization in autoclave

ENDOSCOPIC CAMERA SYSTEM CMOS TECHNOLOGY

Camera head buttons are equipped with user and remote control of accessory devices

Handy rest of the focus ring enables easy and low-friction manipulation

C-mount optics 25 mm and further optics optional

Optics coupling, made of stainless steel, which automatically adapts to any brand. Thus the camera can be prepared for any discipline within seconds.

The angled camera cable facilitates the visual and tactile orientation.

SYSTEM FEATURES

ENDOVUE 1CMOS HD

Video Standard	Full HD 1920 x 1080, 16:9 TV resolution: > 1000 lines
Chip	1/3" MOS Sensitivity: < 3 lux [1/1.4]
Camera Head	With push buttons
Shutter	1/50 [1/60] to 1/100.000 sec
White balance	Auto Tracing, Auto, Manually
User Menu	3 scene files for user settings. Operation with keypad and in Screen Menu
Features	Boost - Function Freeze -Function On-screen-menu 2.5 digital zoom Character generator
Video out	1x HDMI / DVI 1x Y-Pb-Pr (Component) 1x Video (PAL / NTSC) 1x S-Video (PAL / NTSC)
Delivery contains	CCU, camera head with 3 m cable, mains cable, Y/C cable, BNC cable, HDMI - DVI cable, HDMI cable, user manual
Features (optional)	Image capture, video capture

MECHANICAL DATA

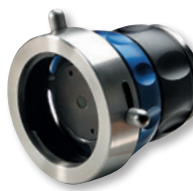
ENDOVUE 1CMOS HD

Dimensions (Camera controller)	w x h x d = 350 x 65 x 275 mm
Dimensions (Camera head)	Ø max. 34 mm x 73 mm
Casing	Stainless steel, aluminium / white coated
Objective connection	C-Mount
Camera cable	3 m / 9.8 ft highly flexible special cable, replaceable, short circuit proof
Weight (camera controller)	4,1 kg
Weight (camera head)	105 g

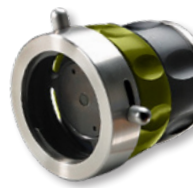
FULL HD CAMERA SYSTEMS - ACCESSORIES



ORDER DATA		LENSES		
	Standard lens	4K	3CMOS	1CMOS
8825	C-Mount 25 mm	●	●	●



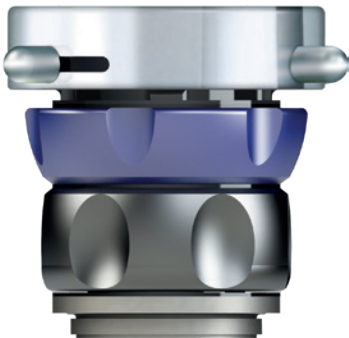
	Zoom lens	4K	3CMOS	1CMOS
8800Z16	C-Mount 16-34 mm	●	●	●



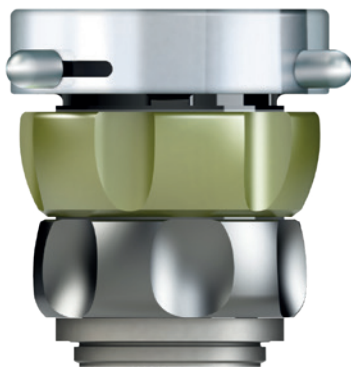
	Zoom lens parafocal	4K	3CMOS	1CMOS
8800Z18	C-Mount 16-32 mm	●	●	●



STANDARD-LENS
25



ZOOM-LENS
16-34



ZOOM-LENS
16-32 PARFOCAL

HD endoscopes for best visibility

Increased durability

FLOATING GLASS FIBRES

The endoscopes are designed, so that the glass fibers are mounted without continuous tension. This results in less stress on the overall mechanical system, in particular on the light entrance and light exit surfaces. This enhances the life expectancy and improves service life.

GOLD STANDARD

According the latest state of the art, the sightglass is fixed in place with gold solder instead of glue. This guarantees a better fit and improves protection against ingress of moisture. Additionally it enables the occurring stress during any autoclave-cycle to better dispense.

Clear and bright view

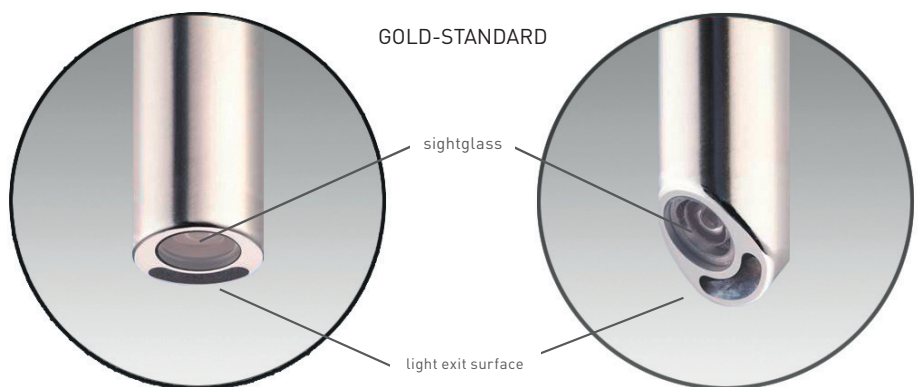
For a clear and unique view our endoscopes offer high HD quality. Together with the optimized illumination they offer a very bright and clear picture, which is rich in contrast.

Added to this is an increased depth of field, which enables the user to change the working distance without having to refocus.

We also offer best image quality by reducing the chromatic aberration and reflections.

Better illumination

For our new family HD endoscopes, special emphasis was placed on the creation of homogeneous and sharp-edged lighting.



HD HYSTEROSCOPES

2,9
mm

ORDER DATA

HD HYSTEROSCOPES



30°



mm	mm	Visual angle	Hysteroscope, autoclaveable, made of stainless steel, with integrated fiber optic light transmission	
302 mm	2,9 mm	30°	1180WA3W	Color code: blue

4
mm

ORDER DATA

HD HYSTEROSCOPES



0°



12°



30°



mm	mm	Visual angle	Hysteroscope, autoclaveable, made of stainless steel, with integrated fiber optic light transmission	
302 mm	4 mm	0°	1145WA0W	Color code: green
302 mm	4 mm	12°	1145WA1	Color code: blue
302 mm	4 mm	30°	1145WA3W	Color code: red

HD LAPAROSCOPES

5
mm

ORDER DATA

HD LAPAROSCOPES





0°



30°



 mm	 mm	Visual angle	Optics, autoclaveable, made of stainless steel, with integrated fiber optic light transmission	
336 mm	5 mm	0°	7605WA0W	Color code: green
336 mm	5 mm	30°	7605WA3W	Color code: red

10
mm

ORDER DATA

HD LAPAROSCOPES





0°



30°



 mm	 mm	Visual angle	Optics, autoclaveable, made of stainless steel, with integrated fiber optic light transmission	
344 mm	10 mm	0°	7620WA0W	Color code: green
344 mm	10 mm	30°	7620WA3W	Color code: red

ACCESSORIES



ORDER DATA

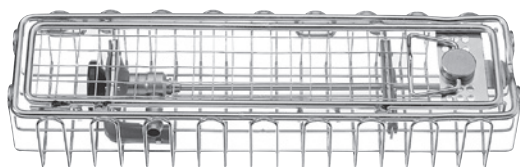
LIGHT CABLE

mm	mm	Fiber optic light cable with glass rod for high and constant light transmission. Standard connections: WISAP / Storz
230 cm	4,8 mm	7761 GS1
300 cm	4,8 mm	7761 GS2
230 cm	3,5 mm	7761 GS4

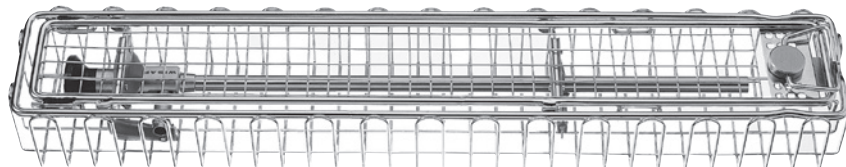
7761 AD1	Light-entry adaptor, with glass rod, for use with cold light cable. WISAP / Storz
----------	---

ORDER DATA

BASKETS FOR STERILIZATION AND STORAGE OF OPTICS



7790 A Endoscope basket



7790 B Endoscope basket

7790 A	Endoscope basket, with silicone optics support, cover for sterilization and storage of arthroscopy-, ENT-, cystoscopy-optics, 290 x 80 x 52 mm
7790 B	Endoscope basket, with silicone optics support, cover for sterilization and storage of laparoscopy-, pelviscopy-, thoracoscopy-, hysteroscopy-, cystoscopy-optics, 460 x 80 x 52 mm



7640-2	Anti-Fog Solution, Ultra Stop, 5 pcs.p.pck.
--------	---

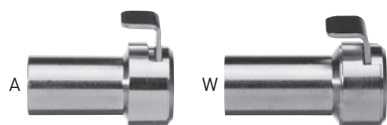


ORDER DATA

ADAPTORS

WISAP-Optics with universal connection for Fiber optic- and Fluid light cables:

7777 W	Light cable: Wolf
7777 A	Light cable: Storz



Adaptors for the connection of WISAP Fiber optic- and Fluid light cables with the following optics:

7768 A	Optics: ACMI
7768 W	Optics: WOLF

LED Illumination L300

- LED light source for optimal light conditions in any endoscopic application
- Free of maintenance because of modern LED Technology
- 6000°K LED light ensures constant daylight colour rendition
- Protection electronics, heat protection filter

**LOW MAINTENANCE
COSTS**

**TECHNICAL DATA****LED ILLUMINATION**

Mains voltage	100-240 VAC; 50-60Hz
Power cons.	max. 300W
Lamp equipment	LED Light source
Colour temperature	6000 °K - 6500 °K
Video in	1 x VBS, 1 x S-VHS (Y/C)
Dimensions	w x h x d = 355 x 120 x 340 mm
Casing	Stainless steel, aluminium / white coated
Weight	10 kg

ORDER DATA**LED ILLUMINATION**

7720L300	LED Illumination incl. mains cable (2,5 m) and accessories
----------	--

XENON LIGHT SOURCE

Xenon Illumination X180/H150

- 180 W Xenon light for optimal light conditions in any endoscopic application
- 150 W Halogen Back-Up light for increased patient safety
- Electronic light intensity regulator
- 6000 °K ensures daylight colour rendition
The colour temperature is independent from the light intensity
- Lamp life indicator
- Protection electronics, heat protection filter

BACKUP LIGHT



TECHNICAL DATA		XENON ILLUMINATION X180 H150
Mains voltage	115/230 VAC; 230/240 VAC, switchable	
Power input	max. 400 VA	
Lamp equipment	Xenon short arc gas discharge lamp 180 W Halogen 150 W	
Colour temperature	Xenon 6000 °K, Halogen 3400 °K	
Video in	1 x VBS, 1 x S-VHS (Y/C)	
Dimensions	w x h x d = 355 x 110 x 365 mm	
Casing	Stainless steel, aluminium / white coated	
Weight	13,5 kg	

ORDER DATA		XENON ILLUMINATION X180 H150
7720X18H	Xenon Illum. X180 H150 incl. mains cable (2,5 m) and accessories	

21.5" Full HD LCD-Display

- 10 bit signal processing
- LED backlight
- Multi-Display / side by side or PIP
- Flip function (horizontal/vertical)
- Memory for 8 users
- Medical approval



MEDICAL
APPROVEMENT

HDMI - INPUT

TECHNICAL DATA 21.5" LCD-DISPLAY

Size	21.5 inch
Resolution	1920 x 1080 pixels (16:9)
Connections	digital: 1xHDMI / 1xDVI / 1xSD-SDI analog: 1 x BNC / 1 x D-Sub / 1 x RGB
Mains voltage	100-240 V / 50/60 Hz
Power input	45 VA
Dimensions	w x h x d = 350 x 130 x 360 mm
Weight	app. 4.5 kg

ORDER DATA 21.5" LCD-DISPLAY

7738-21	21.5" LCD-Display incl. power supply
---------	--------------------------------------

26" Full HD LCD-Display

- 10 bit signal processing
- LED backlight
- Multi-Display / side by side or PIP
- Flip function (horizontal/vertical)
- Memory for 8 users
- Medical approval



MEDICAL
APPROVEMENT

HD-SDI INPUT

TECHNICAL DATA 26" LCD-DISPLAY

Size	26 inch
Resolution	1920 x 1080 pixels (16:9)
Connections	digital: 2 x Multi-SDI / 2 x DVI-D analog: 1 x VBS / 1 x Y/C
Mains voltage	100-240 V / 50/60 Hz
Power input	80 VA
Dimensions	w x h x d = 350 x 130 x 360 mm
Weight	app. 8 kg

ORDER DATA 26" LCD-DISPLAY

7738-26	26" LCD Display incl. power supply
---------	------------------------------------

WISAP Medical Technology GmbH

Fichtenstraße 27

D - 85649 Brunnthal/Hofolding

Tel. +49(0)81 04/8908-10

Fax. +49(0)81 04/8908-90

www.wisap.de · info@wisap.de

W i S A P[®]